

Quantitative Aptitude -**Question No.1 (Question Id - 28516)**

Marks: 4.00

Which of the following statements are True?

- A. The mean of x, y, z is y . Then $x+z=2y$.
- B. Median of 15, 28, 72, 56, 44, 32, 31, 43 and 51 is 43.
- C. Mode of 2, 3, 4, 5, 0, 1, 3, 3, 4 and 3 is 3.

Choose the correct answer from the options given below:

- 1. A and B only
- 2. A and C only
- 3. B and C only
- 4. A, B and C

- ☐ 1
- ☐ 2
- ☐ 3
- ☒ 4 (Chosen option)

Question No.2 (Question Id - 28531)

Marks: 4.00

K^2-1 is divisible by 8, if K is

- 1. an integer
- 2. a natural number
- 3. an even integer
- 4. an odd integer

- ☐ 1
- ☐ 2
- ☐ 3
- ☒ 4 (Chosen option)

Question No.3 (Question Id - 28508)

Marks: 4.00

Given below are two statements:

Statement (I): $(x^2 + 3x + 1) = (x - 2)^2$ is not a quadratic equation

Statement (II): The nature of roots of quadratic equation $x^2 + 2x\sqrt{3} + 3 = 0$ are real and equal.

In light of the above statements, choose the *most appropriate* answer from the options given below.

- 1. Both Statement (I) and Statement (II) are true.
- 2. Both Statement (I) and Statement (II) are false.
- 3. Statement (I) is true but Statement (II) is false.
- 4. Statement (I) is false but Statement (II) is true.

- ☐ 1 (Chosen option)
- ☐ 2
- ☐ 3
- ☐ 4

Question No.4 (Question Id - 28524)

Marks: 4.00

The total number of seconds in P weeks, P days, P hours, P minutes and P seconds is.

1. 11580 P
2. 11581 P
3. 694860 P
4. 694861 P

- ☐ 1
- ☐ 2
- ☐ 3
- ☐ 4 (Chosen option)

Question No.5 (Question Id - 28527)

Marks: 4.00

Given below are two statements based on the following:

Aman takes half time in rowing a certain distance downstream than upstream.

Statement (I): Ratio of the speed of the boat in still water to the speed of the water current is 2: 1.

Statement (II): If the speed of the boat in still water is 6 km per hour, then the speed of the water current is 2 km per hour.

In light of the above statements, choose the *most appropriate* answer from the options given below.

1. Both Statement (I) and Statement (II) are true.
2. Both Statement (I) and Statement (II) are false.
3. Statement (I) is true but Statement (II) is false.
4. Statement (I) is false but Statement (II) is true.

- ☐ 1
- ☐ 2
- ☐ 3
- ☐ 4 (Chosen option)

Question No.6 (Question Id - 28501)

Marks: 4.00

Which of the following statements are True in the context of circles?

- A. A tangent of a circle touches it at two points.
- B. A circle can have two parallel tangents at the most.
- C. There is no tangent to a circle passing through a point inside the circle.

Choose the correct answer from the options given below:

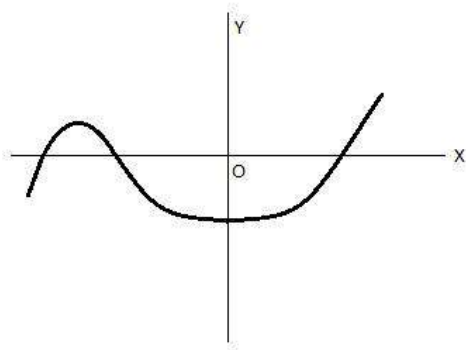
1. A and B Only
2. A, B and C
3. A and C Only
4. B and C Only

- ☐ 1
- ☐ 2 (Chosen option)
- ☐ 3
- ☐ 4

Question No.7 (Question Id - 28507)

Marks: 4.00

The graph of a polynomial $y=f(x)$ is shown in figure below, then the number of its zeros is:



- 1. 4
 - 2. 3
 - 3. 2
 - 4. 1
- ☐ 1
- ☒ 2 (Chosen option)
- ☐ 3
- ☐ 4

Question No.8 (Question Id - 28512)

Marks: 4.00

Let A and B be two events such that $P(A)=0.25$, $P(B)=0.50$ and $P(A \cap B)=0.14$. The probability that neither A nor B occurs is

- 1. 0.09
 - 2. 0.19
 - 3. 0.39
 - 4. 0.29
- ☐ 1
- ☐ 2
- ☒ 3 (Chosen option)
- ☐ 4

Question No.9 (Question Id - 28532)

Marks: 4.00

The radii of two cones are in the ratio 2:3 and their volumes in the ratio 1:3. Then the ratio of their heights is

- 1. 3:2
 - 2. 1:2
 - 3. 3:4
 - 4. 2:3
- ☐ 1
- ☐ 2
- ☒ 3 (Chosen option)
- ☐ 4

Question No.10 (Question Id - 28502)

Marks: 4.00

If the difference between the circumference and radius of circle is 37 cm, then using $\pi = \frac{22}{7}$, what is the circumference (in cm) of the circle?

1. 42 cm
2. 46 cm
3. 44 cm
4. 38 cm

- ☐ 1
- ☐ 2
- ☒ 3 (Chosen option)
- ☐ 4

Question No.11 (Question Id - 28504)

Marks: 4.00

The mean of 25 observations is 36. If the mean of the first 13 observations is 32 and that of the last 13 observations is 39, then the 13th observation is

1. 16
2. 23
3. 21
4. 18

- ☐ 1
- ☒ 2 (Chosen option)
- ☐ 3
- ☐ 4

Question No.12 (Question Id - 28522)

Marks: 4.00

If the eight-digit number 5a32465b is divisible by 88, then $2a+5b=$

1. 36
2. 38
3. 40
4. 24

- ☒ 1 (Chosen option)
- ☐ 2
- ☐ 3
- ☐ 4

Question No.13 (Question Id - 28529)

Marks: 4.00

If the pair of linear equations $2x+3y=7$ and $2px+(p+q)y=28$ has infinite number of solutions, then $(p,q)=$

1. (8, 4)
2. (4, 8)
3. (3, 6)
4. (6, 3)

- ☐ 1
- ☒ 2 (Chosen option)
- ☐ 3
- ☐ 4

Question No.14 (Question Id - 28511)

Marks: 4.00

Given below are two statements:

Statement (I): The volume of a right circular cylinder of base radius 7 cm and height 10 cm is 1540 cm^3 . (Take $\pi = \frac{22}{7}$).

Statement (II): Total surface area of the cylinder having radius of base 14 cm and height 30 cm, is 3872 cm^2 . (Take $\pi = \frac{22}{7}$).

In light of the above statements, choose the *most appropriate* answer from the options given below.

1. Both Statement (I) and Statement (II) are true.
2. Both Statement (I) and Statement (II) are false.
3. Statement (I) is true but Statement (II) is false.
4. Statement (I) is false but Statement (II) is true.

- ☒ 1 (Chosen option)
- ☐ 2
- ☐ 3
- ☐ 4

Question No.15 (Question Id - 28506)

Marks: 4.00

The expression $2x^3 + ax^2 + bx + 3$, where a and b are constants, has a factor of $x-1$ and leaves a remainder of 15 when divided by $x+2$. Then, (a, b)=

1. (-3,8)
2. (3,-8)
3. (-3,-8)
4. (3, 8)

- ☐ 1
- ☐ 2
- ☐ 3
- ☐ 4

Question No.16 (Question Id - 28525)

Marks: 4.00

$$\sqrt{3 + \sqrt{5}} =$$

1. $\sqrt{2} + 1$
2. $\sqrt{\frac{5}{2}} + \sqrt{\frac{1}{2}}$
3. $\sqrt{\frac{7}{2}} - \sqrt{\frac{1}{2}}$
4. $\sqrt{\frac{9}{2}} - \sqrt{\frac{3}{2}}$

- ☐ 1
- ☐ 2
- ☐ 3
- ☐ 4

Question No.17 (Question Id - 28514)

Marks: 4.00

If $\sin(\theta) - \cos(\theta) = 0$, then the value of $\sin^4(\theta) + \cos^4(\theta)$ is

1. 1
 2. $\frac{1}{2}$
 3. $\frac{3}{4}$
 4. $\frac{1}{4}$
- ☐ 1
- ☒ 2 (Chosen option)
- ☐ 3
- ☐ 4

Question No.18 (Question Id - 28509)

Marks: 4.00

In $\triangle ABC$, $\angle B = 90^\circ$, $BC = 5\text{cm}$, $AC - AB = 1\text{cm}$, then $\frac{1 + \sin(c)}{1 + \cos(c)}$ is

1. $\frac{5}{6}$
 2. $\frac{6}{5}$
 3. 2
 4. $\frac{25}{18}$
- ☐ 1
- ☐ 2
- ☐ 3
- ☒ 4 (Chosen option)

Question No.19 (Question Id - 28528)

Marks: 4.00

The number of integral solutions of the equation

$$7\left(y + \frac{1}{y}\right) - 2\left(y^2 + \frac{1}{y^2}\right) = 9 \text{ is}$$

1. 0
 2. 1
 3. 2
 4. 3
- ☐ 1
- ☐ 2
- ☐ 3
- ☐ 4

Question No.20 (Question Id - 28513)

Marks: 4.00

Given below are two statements, one is labelled as Assertion (A) and other one labelled as Reason (R).

Assertion (A) : Sum of first hundred even natural numbers divisible by 5 is 45050.

Reason (R) : Sum of first n -terms of an Arithmetic Progression is given by

$$S_n = \frac{n}{2} (a + l) \text{ where } a = \text{first term, } l = \text{last term}$$

In light of the above statements, choose the *correct* answer from the options given below.

1. Both (A) and (R) are true and (R) is the correct explanation of (A).
2. Both (A) and (R) are true but (R) is NOT the correct explanation of (A).
3. (A) is true but (R) is false.
4. (A) is false but (R) is true.

- ☐ 1
- ☐ 2
- ☐ 3
- ☒ 4 (Chosen option)

Question No.21 (Question Id - 28510)

Marks: 4.00

The area of the circle that can be inscribed in a square of side 6 cm is

1. $36 \pi \text{ cm}^2$
2. $18 \pi \text{ cm}^2$
3. $12 \pi \text{ cm}^2$
4. $9 \pi \text{ cm}^2$

- ☐ 1
- ☐ 2
- ☐ 3
- ☒ 4 (Chosen option)

Question No.22 (Question Id - 28517)

Marks: 4.00

Given below are two statements in the context of throwing two different dice together:

Statement (I): The probability that the two numbers obtained have even sum, is 0.50.

Statement (II): The probability that the two numbers obtained have even product is 0.75.

In light of the above statements, choose the *most appropriate* answer from the options given below.

1. Both Statement (I) and Statement (II) are true.
2. Both Statement (I) and Statement (II) are false.
3. Statement (I) is true but Statement (II) is false.
4. Statement (I) is false but Statement (II) is true.

- ☒ 1 (Chosen option)
- ☐ 2
- ☐ 3
- ☐ 4

Question No.23 (Question Id - 28533)

Marks: 4.00

How many proper divisors (that is, divisors other than 1 or 7200) does 7200 have?

1. 54
2. 52
3. 20
4. 18

- ☐ 1
- ☒ 2 (Chosen option)
- ☐ 3
- ☐ 4

Question No.24 (Question Id - 28530)

Marks: 4.00

In a survey of 100 students, the number of students studying various languages were found to be: English only-18, English but not Hindi-23, English and German-8, English-26, German-48, German and Hindi-8, no language-24. Then, which of the following statements are true?

- A. Number of students who were studying Hindi is 18.
- B. Number of students who were studying English and Hindi is 3.
- C. Number of students who were studying English, Hindi and German is 3.

Choose the correct answer from the options given below:

1. A and B only
2. A and C only
3. B and C only
4. A, B and C

- ☐ 1
- ☐ 2
- ☐ 3
- ☒ 4 (Chosen option)

Question No.25 (Question Id - 28515)

Marks: 4.00

A 30 metre deep well, with diameter 7 metre is dug and the earth from digging is evenly spread out to form a platform of size 22 metre by 14 metre. The height of the platform is

1. 3.5 metre
2. 3.75 metre
3. 2.5 metre
4. 3 meter

- ☐ 1
- ☒ 2 (Chosen option)
- ☐ 3
- ☐ 4

Question No.26 (Question Id - 28520)

Marks: 4.00

Given below are two statements:

Statement (I): The difference, the sum and the product of two numbers are in the ratio 1: 5: 12. The product of the two numbers is 18.

Statement (II): The last digit in the decimal representation of 2^{91} is 6.

In light of the above statements, choose the *most appropriate* answer from the options given below.

1. Both Statement (I) and Statement (II) are true.
2. Both Statement (I) and Statement (II) are false.
3. Statement (I) is true but Statement (II) is false.
4. Statement (I) is false but Statement (II) is true.

- ☐ 1
- ☒ 2 (Chosen option)
- ☐ 3
- ☐ 4

Question No.27 (Question Id - 28518)

Marks: 4.00

Sonali buys 2 Pen Drives A and B and their cost price is in the ratio of 5:6 respectively. If she sells them on 10% profit each, she earns total profit of ₹ 22. What will be her total profit, if she sells Pen Drive A on 20 % loss and Pen Drive B on 30% profit?

1. ₹ 16
2. ₹ 13
3. ₹ 14
4. ₹ 24

- ☒ 1 (Chosen option)
- ☐ 2
- ☐ 3
- ☐ 4

Question No.28 (Question Id - 28521)

Marks: 4.00

Amicable numbers are a pair of distinct natural numbers (a, b) such that the sum of the proper divisors of a equals b and the sum of the proper divisors of b equals a. Given that (220, y) is a pair of amicable numbers, $y = \underline{\hspace{1cm}}$. (For example, proper divisors of 10 are 1, 2, 5, 10).

1. 225
2. 284
3. 404
4. 768

- ☒ 1
- ☐ 2 (Chosen option)
- ☐ 3
- ☐ 4

Question No.29 (Question Id - 28526)

Marks: 4.00

Sumit has ₹ 90000 with him. He purchases three items A, B and C for ₹ 15000, ₹13000 and ₹ 35000 respectively and puts the remaining money in a bank deposit that pays compound interest @15% per annum. After 2 years, he sells off the three items at 80% of their original price and also withdraws his entire money from the bank by closing the account. What is the total change in his asset?

1. - 4.152%
2. + 3.152%
3. - 4.325%
4. + 5.552%

- ☐ 1
- ☐ 2
- ☒ 3 (Chosen option)
- ☐ 4

Question No.30 (Question Id - 28503)

Marks: 4.00

Two identical solid cubes of side 5 cm are joined end to end. Then the total surface area of the resulting cuboid is

1. 300 cm²
2. 250 cm²
3. 225 cm²
4. 200 cm²

- ☐ 1
- ☐ 2
- ☒ 3 (Chosen option)
- ☐ 4

Question No.31 (Question Id - 28523)

Marks: 4.00

In a Women's Chess Championship having 300 entrants, a player is eliminated whenever she loses a match. It is given that no match results in a draw. The number of matches that are played in the entire Championship is

1. 301
2. 300
3. 299
4. 298

- ☐ 1
- ☐ 2
- ☐ 3
- ☐ 4

Question No.32 (Question Id - 28519)

Marks: 4.00

Given below are two statements:

Statement (I): 4 boys and 8 girls completed $\frac{1}{3}$ rd of work in 5 days. After that 3 boys and 3 girls increased, and they completed $\frac{1}{3}$ rd more work in 3 days. If the remaining work is to be completed in 2 days, then the number of girls that should be increased is 32.

Statement (II): The ratio of time taken by A and C to do a work is 1: 2 respectively. B is $166\frac{2}{3}\%$ more efficient than C. Time taken by A to complete 6% of work is 6 days. Then, the time taken by B and C together to complete the whole work is $54\frac{6}{11}$ days.

In light of the above statements, choose the *most appropriate* answer from the options given below.

1. Both Statement (I) and Statement (II) are true.
2. Both Statement (I) and Statement (II) are false.
3. Statement (I) is true but Statement (II) is false.
4. Statement (I) is false but Statement (II) is true.

- ☐ 1
☐ 2
☐ 3
☐ 4

Question No.33 (Question Id - 28505)

Marks: 4.00

The probabilities that A, B, and C can solve a problem independently are $\frac{1}{3}$, $\frac{1}{3}$ and $\frac{1}{4}$ respectively. The probability that only two of them are able to solve the problem is

1. $\frac{5}{36}$
2. $\frac{7}{36}$
3. $\frac{13}{36}$
4. $\frac{1}{2}$

- ☐ 1
☐ 2
☒ 3 (Chosen option)
☐ 4

Data Intre and Log Reasoning -

Question No.1 (Question Id - 28536)

Marks: 4.00

The table below gives the percentage of marks obtained by 6 students in 6 subjects in an examination. Answer the following questions based on the data given in the table. The numbers in brackets are the maximum marks in each subject.

Student	Subjects(Max.Marks)					
	Physics(120)	Biology(120)	Maths(120)	Geology(120)	Economics(120)	English(120)
A	70	75	70	65	60	70
B	80	70	75	60	50	75
C	75	72	71	70	60	65
D	60	70	65	55	60	70
E	70	75	65	50	55	60
F	65	70	60	65	50	60

How many students have obtained more than 65% overall marks in all the subjects and who are those students?

1. 3; A, B, C
2. 2; B and C
3. only one; B
4. 3; B, C, D

- ☒ 1 (Chosen option)
- ☐ 2
- ☐ 3
- ☐ 4

Question No.2 (Question Id - 28535)

Marks: 4.00

The table below gives the percentage of marks obtained by 6 students in 6 subjects in an examination. Answer the following questions based on the data given in the table. The numbers in brackets are the maximum marks in each subject.

Student	Subjects(Max.Marks)					
	Physics(120)	Biology(120)	Maths(120)	Geology(120)	Economics(120)	English(120)
A	70	75	70	65	60	70
B	80	70	75	60	50	75
C	75	72	71	70	60	65
D	60	70	65	55	60	70
E	70	75	65	50	55	60
F	65	70	60	65	50	60

Find the average marks obtained by a student in Economics and Physics respectively.

1. 84, 67
2. 65, 83
3. 66, 85
4. 67, 84

- ☐ 1
- ☐ 2
- ☐ 3
- ☒ 4 (Chosen option)

Question No.3 (Question Id - 28534)

Marks: 4.00

The table below gives the percentage of marks obtained by 6 students in 6 subjects in an examination. Answer the following questions based on the data given in the table. The numbers in brackets are the maximum marks in each subject.

Student	Subjects(Max.Marks)					
	Physics(120)	Biology(120)	Maths(120)	Geology(120)	Economics(120)	English(120)
A	70	75	70	65	60	70
B	80	70	75	60	50	75
C	75	72	71	70	60	65
D	60	70	65	55	60	70
E	70	75	65	50	55	60
F	65	70	60	65	50	60

In which subject the overall percentage is maximum and what is the percentage?

1. Biology, 72%
2. Physics, 70%
3. Maths, 71%
4. English, 71%

- ☐ 1
☒ 2 (Chosen option)
☐ 3
☐ 4

Question No.4 (Question Id - 28537)

Marks: 4.00

The table below gives the percentage of marks obtained by 6 students in 6 subjects in an examination. Answer the following questions based on the data given in the table. The numbers in brackets are the maximum marks in each subject.

Student	Subjects(Max.Marks)					
	Physics(120)	Biology(120)	Maths(120)	Geology(120)	Economics(120)	English(120)
A	70	75	70	65	60	70
B	80	70	75	60	50	75
C	75	72	71	70	60	65
D	60	70	65	55	60	70
E	70	75	65	50	55	60
F	65	70	60	65	50	60

What is the overall percentage of A, B and C respectively?

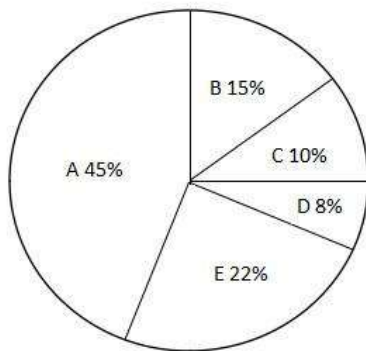
1. 68.44, 69.29, 68.94
2. 68.94, 68.14, 68.29
3. 68.29, 68.14, 68.94
4. 67.14, 68.14, 69.94

- ☐ 1
☐ 2
☒ 3 (Chosen option)
☐ 4

Question No.5 (Question Id - 28539)

Marks: 4.00

The following Pie chart shows the share of sales of five computer brands (A-E) in India in 2005:



Considering sale of A increased by 50 % in 2006, sale of E increased by 10 % and all other brands had no change in sales. Total sales in 2006 was 2,16,000. What was the sale of A in 2005 (approximately)?

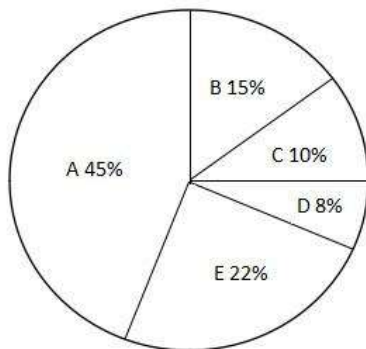
1. 1,23,000
2. 1,08,000
3. 77,947
4. 1,16,920

- ☐ 1
- ☐ 2
- ☒ 3 (Chosen option)
- ☐ 4

Question No.6 (Question Id - 28540)

Marks: 4.00

The following Pie chart shows the share of sales of five computer brands (A-E) in India in 2005:



In 2006, if sales value of B increases by 10 % and that of A decreases by 10 %. What is the percentage change in sales, if sale of all other brands remain same?

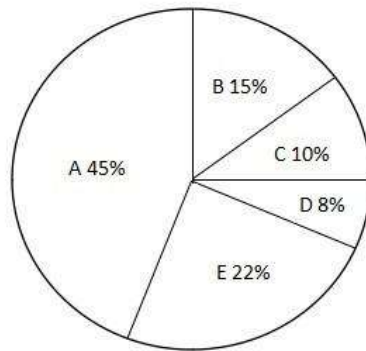
1. No change
2. Decrease by 3 %
3. Increase by 6 %
4. Decrease by 1 %

- ☐ 1
- ☐ 2
- ☐ 3
- ☒ 4 (Chosen option)

Question No.7 (Question Id - 28538)

Marks: 4.00

The following Pie chart shows the share of sales of five computer brands (A-E) in India in 2005:



In 2006, value wise sale of A increased by 50% and that of E increased by 10%. The sales of all other brands remained the same. By what percentage total sales(value wise) grew in 2006 as compared to 2005?

1. 124%
2. 60%
3. 24.7%
4. 12.1%

- ☐ 1
☐ 2
☐ 3
☐ 4

Question No.8 (Question Id - 28542)

Marks: 4.00

Five people A, B, C, D and E participated in a race. D ran faster than E but slower than B. C ran slower than E but was not the slowest. Who ran at the fastest speed?

1. A
2. C
3. B
4. D

- ☐ 1
☐ 2
☒ 3 (Chosen option)
☐ 4

Question No.9 (Question Id - 28541)

Marks: 4.00

There is a certain relationship between two given terms on one side of (: :) and one term is given on the other side of (: :). While another term is to be found from given alternatives having the same relation with this term as the terms of given pair.

BJMS : EMPV :: AWPL : ?

1. DYRO
2. CYRN
3. DZSO
4. BYTN

- ☐ 1
☐ 2
☒ 3 (Chosen option)
☐ 4

Question No.10 (Question Id - 28544)

Marks: 4.00

Study the table given below carefully and answer the questions that follow:

Number of vehicles(in hundred)passing through a toll plaza in different weeks of September.

Vehicle→ Week↓	Bus	Truck	Car
I	28.3	15.4	40.2
II	24.5	12.3	36.1
III	20.4	14.2	42.9
IV	24.4	15.7	39.8

What was the average number of buses passing through the toll plaza per week?

1. 2530
2. 2860
3. 2070
4. 2440

- ☐ 1
☐ 2
☐ 3
☒ 4 (Chosen option)

Question No.11 (Question Id - 28543)

Marks: 4.00

Study the table given below carefully and answer the questions that follow:

Number of vehicles(in hundred)passing through a toll plaza in different weeks of September.

Vehicle→ Week↓	Bus	Truck	Car
I	28.3	15.4	40.2
II	24.5	12.3	36.1
III	20.4	14.2	42.9
IV	24.4	15.7	39.8

In which week of September, the total number of vehicles paasing through the toll plaza was the second highest?

1. II
2. IV
3. I
4. III

- ☐ 1
☒ 2 (Chosen option)
☐ 3
☐ 4

Question No.12 (Question Id - 28554)

Marks: 4.00

Answer the following based on analogy. Ecology is related to Environment in the same way as Histology is related to_____.

1. History
2. Hormones
3. Tissues
4. Fossils

- ☐ 1
☒ 2 (Chosen option)

- ☐ 3
☐ 4

Question No.13 (Question Id - 28547)

Marks: 4.00

Find the number that can replace question mark(?) in the series given below.
2, 12, 30, 56, 90, ?

1. 132
2. 146
3. 136
4. 128

- ☐ 1 (Chosen option)
☐ 2
☐ 3
☐ 4

Question No.14 (Question Id - 28566)Marks:
4.00

Six persons P, Q, R, S, T and U were sitting around a hexagon table facing the center. U was sitting opposite to P, who was in the immediate left of R. S was sitting to the immediate right of U and T was exactly between P and S. What was the sitting location of Q ?

1. Opposite to R
2. Opposite to P
3. Between U and R
4. Immediate left of P

- ☐ 1
☐ 2
☐ 3 (Chosen option)
☐ 4

Question No.15 (Question Id - 28558)

Marks: 4.00

In a certain Coded language CAT is coded as 6423 . How LION will be coded in that language?

1. 15121817
2. 1291514
3. 961211
4. 14131716

- ☐ 1
☐ 2
☐ 3
☐ 4

Question No.16 (Question Id - 28563)

Marks: 4.00

Sham knows that Ram's birthday falls between 14th and 21st October. According to Shalini Ram's birthday falls between 15th and 20th October. Both of them also know that this year his (Ram's) birthday falls on Wednesday. If 2nd October is Monday, then when does Ram's birthday fall?

1. 16th October
2. 17th October
3. 18th October
4. 19th October

- ☐ 1

- ☐ 2
☒ 3 (Chosen option)
☐ 4

Question No.17 (Question Id - 28551)

Marks: 4.00

Find the missing term in the series given below:

10,11,13,17,25,32,37, ? _____

1. 69
2. 45
3. 62
4. 47

- ☐ 1
☐ 2
☐ 3
☐ 4

Question No.18 (Question Id - 28557)

Marks: 4.00

In a certain coding language, HE is coded as 418 and GO is coded as 240. How SHE will be coded in that language?

1. 4444
2. 3333
3. 4433
4. 3344

- ☐ 1
☐ 2
☐ 3
☐ 4

Question No.19 (Question Id - 28555)

Marks: 4.00

The numbers in the figure below have certain logic/pattern. Using that logic/pattern, find out the number that can be inserted in place of ?.



1. 45
2. 42
3. 71
4. 60

- ☐ 1
☐ 2
☒ 3 (Chosen option)
☐ 4

Question No.20 (Question Id - 28546)Marks:
4.00

Each of four persons P, Q, R and S play one game out of four different games namely Chess, Tennis, Cricket and Football not necessarily in the same order. These persons live in one of the four different cities of Bombay, Calcutta, Ahmedabad, and Jaipur not necessarily in the same order. Further the following information is also given:

- a) Neither S nor the person from Calcutta plays Cricket.
- b) Q plays either Football or Chess.
- c) P is from Bombay
- d) P plays either Chess or Tennis
- e) The person who plays Tennis is from Jaipur

The person who lives in Ahmedabad plays which of the following sports?

- 1. Tennis
- 2. Chess
- 3. Cricket
- 4. Football

- ☐ 1
- ☐ 2
- ☒ 3 (Chosen option)
- ☐ 4

Question No.21 (Question Id - 28549)

Marks:
4.00

Two cars A and B start running from the opposite ends X and Y of a national highway with a length of 120 Km. Car A starts from end X and runs 30 Km straight. It then takes right turn and runs 15 Km, then turns left and runs for 30 Km. There after, the Car turns towards the highway and reaches back on the highway. In the mean time the car B has also started running from the other end Y of the highway, but due to a minor breakdown could run only for 35 Km along the highway till the time the car A has reached back on the highway. What is the distance between two cars at this point?

- 1. 28 Km
- 2. 35 Km
- 3. 30 Km
- 4. 25 Km

- ☐ 1
- ☐ 2
- ☐ 3
- ☒ 4 (Chosen option)

Question No.22 (Question Id - 28561)

Marks: 4.00

Find the odd one among the following

- 1. PWSORAR
- 2. GPNEIO
- 3. TPORAR
- 4. JRABLNI

- ☐ 1
- ☐ 2
- ☐ 3
- ☐ 4

Question No.23 (Question Id - 28548)

Marks: 4.00

Find the number that can replace question mark (?) in the series given below.

15, 18, 17, 21, 20, 25, 24, 30, 29, ?

1. 32
2. 36
3. 28
4. 59

- ☐ 1
☒ 2 (Chosen option)
☐ 3
☐ 4

Question No.24 (Question Id - 28564)

Marks: 4.00

A Clock shows the time as 3:00 p.m. What would be time on the clock, when the hour hand moves 135° ?

1. 5:30
2. 7:30
3. 6:30
4. 8:30

- ☐ 1
☒ 2 (Chosen option)
☐ 3
☐ 4

Question No.25 (Question Id - 28562)

Marks: 4.00

Match **List-I** with **List-II**

List-I	List-II
Angle between hour hand and minute hand of a clock	Time
(A). 105°	(I). 7:15
(B). 45°	(II). 9:15
(C). 127.5°	(III). 4:30
(D). 187.5°	(IV). 2:30

Choose the **correct** answer from the options given below:

1. (A) - (IV), (B) - (III), (C) - (I), (D) - (II)
2. (A) - (I), (B) - (II), (C) - (III), (D) - (IV)
3. (A) - (II), (B) - (I), (C) - (III), (D) - (IV)
4. (A) - (III), (B) - (IV), (C) - (I), (D) - (II)

- ☐ 1
☐ 2
☐ 3
☒ 4 (Chosen option)

Question No.26 (Question Id - 28565)

Marks: 4.00

Suppose that the year 2008 starts with the day 'Monday'; The calendar for the year 2009 will be the same in the year:

1. 2015
2. 2011
3. 2013
4. 2016

- ☐ 1 (Chosen option)
- ☐ 2
- ☐ 3
- ☐ 4

Question No.27 (Question Id - 28550)

Marks: 4.00

Which of the words can not be formed from the letters of the word 'CONSULTATION'?

1. NATION
2. STATION
3. SOLUTION
4. SALUTE

- ☐ 1
- ☐ 2
- ☐ 3
- ☐ 4 (Chosen option)

Question No.28 (Question Id - 28553)

Marks: 4.00

Unscramble the letters in the given words in order to generate meaningful words and then find the odd one out.

EIWNTR LCUOD UMRSME PIGRSN

1. EIWNTR
2. LCUOD
3. UMRSME
4. PIGRSN

- ☐ 1
- ☐ 2 (Chosen option)
- ☐ 3
- ☐ 4

Question No.29 (Question Id - 28560)

Marks: 4.00

The main statement is followed by four answers. Select the one that logically follows from the main statement

"If the game is interesting, then I play it"

1. I played a game means it is interesting
2. the game is interesting. I do not play it
3. I did not play the game though it was interesting.
4. I did not play a game implies that the game was not interesting

- ☐ 1 (Chosen option)
- ☐ 2
- ☐ 3
- ☐ 4

Question No.30 (Question Id - 28556)

Marks: 4.00

A boy runs 150 meters towards south from his house. He then turns left and runs 300 meters, again turns left and runs 350 meters. Now he turns right and runs 50 meters to reach the stadium. In which direction is the stadium from house of the boy ?

1. North
2. South-East
3. East
4. North-East

- ☐ 1
- ☐ 2
- ☐ 3
- ☒ 4 (Chosen option)

Question No.31 (Question Id - 28545)

Marks: 4.00

Eight persons A, B, C, D, E, F, G and H are sitting around a circle, facing the centre. E sits fourth to the right of F while second to the left of A. D is not the neighbour of A & C. B sits third to the right of D. F never sits next to H. Which of the following pairs sit between G and A ?

1. C, F
2. A, B
3. E, H
4. D, H

- ☒ 1 (Chosen option)
- ☐ 2
- ☐ 3
- ☐ 4

Question No.32 (Question Id - 28552)

Marks: 4.00

Ram and Sham are real brothers. Sita and Gita are real sisters. Ram's son is Gita's real brother. How is Sham related to Sita?

1. Sham is brother of Sita
2. Sham is father of Sita
3. Sham is uncle of Sita
4. Sham is Grand father of Sita

- ☐ 1
- ☐ 2
- ☒ 3 (Chosen option)
- ☐ 4

Question No.33 (Question Id - 28559)

Marks: 4.00

Six books of various subjects are kept in a shelf one on the top of the other. Electronics book is just above the Chemistry book. Statistics book is between Commerce book and Environmental Science book. The book of Botany is between Electronics and Commerce books. The book of which subject is at the top?

1. Chemistry
2. Commerce
3. Environmental Science.
4. Electronics

- ☐ 1
- ☐ 2
- ☒ 3 (Chosen option)

☐ 4**Verbal Abil and Reading Comp -****Question No.1 (Question Id - 28571)**

Marks: 4.00

Arrange the following parts of a sentence in order to make a meaningful sentence.

P: around the town

Q: when I was young,

R: delivering food to customers

S: shopkeepers would cycle

1. RSPQ

2. QSPR

3. SRPQ

4. PQRS

☐ 1☒ 2 (Chosen option)☐ 3☐ 4**Question No.2 (Question Id - 28586)**

Marks: 4.00

Pick out the correct sentence in indirect narration of the following sentence:

He said, "Let us wait for the award."

1. He proposed him to wait for the award.

2. He proposed that they should wait for the award.

3. He agreed to wait for the award with him.

4. He proposed me that I should wait for the award.

☐ 1☒ 2 (Chosen option)☐ 3☐ 4**Question No.3 (Question Id - 28587)**

Marks: 4.00

Read the following paragraph and determine carefully the main idea. From the given four choices, select the one statement that best supports the author's point.

Critical Reading is a demanding process. To read critically, you must slow down reading and with pencil in hand, perform specific operations on the text. Mark-up the text with your reactions, conclusions and questions. When you read, you become an active participant.

This paragraph best supports the statement that

1. critical reading is a slow, dull, but essential process.

2. readers should get in the habit of questioning the truth of what they read.

3. the best critical reading happens at critical times in a person's life.

4. critical reading requires thoughtful and careful attention.

☐ 1☐ 2☐ 3☒ 4 (Chosen option)**Question No.4 (Question Id - 28573)**

Marks: 4.00

Pick out the correctly spelt word.

1. disastar
2. documentation
3. daviation
4. dormitary

- ☐ 1
- ☒ 2 (Chosen option)
- ☐ 3
- ☐ 4

Question No.5 (Question Id - 28585)

Marks: 4.00

This question has a word followed by four choices. From the choices, identify the one which is opposite in meaning (antonym) for the main word and mark its number as your answer.

CONSIDERATE

1. Comprehensive
2. Atrocious
3. Malignant
4. Indifferent

- ☐ 1
- ☐ 2
- ☒ 3 (Chosen option)
- ☐ 4

Question No.6 (Question Id - 28579)

Marks: 4.00

This question gives a word followed by four choices. From the choices, select the most suitable synonym (word which means the same) for the main word and mark its number as the answer.

FAMISHED

1. Agricultural
2. Hungry
3. Prestigious
4. Feasible

- ☐ 1
- ☐ 2
- ☒ 3 (Chosen option)
- ☐ 4

Question No.7 (Question Id - 28583)

Marks: 4.00

Pick out the correct sentence from the following sentences.

1. Who had replaced the player after she was injured?
2. Who replaced the player after she were injured?
3. Who was replacing the player after she had been injured?
4. Who replaced the player after she was injured?

- ☒ 1 (Chosen option)
- ☐ 2
- ☐ 3
- ☐ 4

Question No.8 (Question Id - 28582)

Marks: 4.00

Pick out the correct sentence in indirect narration of the following sentence:
She said to him, "Please wait here till I return"

1. She requested her to wait there till she returned.
2. She requested him to wait there till she returned.
3. She requested him to wait there till she returns.
4. She requests him to wait there till she had returned.

- ☐ 1
- ☒ 2 (Chosen option)
- ☐ 3
- ☐ 4

Question No.9 (Question Id - 28577)

Marks: 4.00

Pick out the synonym of the word 'reproach'

1. reprimand
2. appreciate
3. understand
4. to approach again

- ☐ 1
- ☐ 2
- ☒ 3 (Chosen option)
- ☐ 4

Question No.10 (Question Id - 28584)

Marks: 4.00

Fill in the blank with suitable form of verb.

A bird in the hand____worth two in the bush.

1. are
2. were
3. was
4. is

- ☒ 1 (Chosen option)
- ☐ 2
- ☐ 3
- ☐ 4

Question No.11 (Question Id - 28574)

Marks: 4.00

Read the following sentence and choose the best definition for the underlined word by searching for context clues in the sentence.

The attorney wanted to expedite the process, because her client was becoming impatient.

1. accelerate
2. evaluate
3. reverse
4. justify

- ☒ 1 (Chosen option)
- ☐ 2
- ☐ 3
- ☐ 4

Question No.12 (Question Id - 28581)

Marks: 4.00

Fill in the blank with suitable preposition.

He put_____ his departure for a week.

1. down
2. off
3. of
4. on

- ☐ 1 (Chosen option)
- ☐ 2
- ☐ 3
- ☐ 4

Question No.13 (Question Id - 28578)

Marks: 4.00

Pick out the correct sentence in passive voice of the following sentence.

He will finish the work in a fortnight.

1. He would be finished the work in that fortnight.
2. The work would be finished in that fortnight.
3. The work was finished by him in a fortnight.
4. The work will be finished by him in a fortnight.

- ☐ 1
- ☐ 2 (Chosen option)
- ☐ 3
- ☐ 4

Question No.14 (Question Id - 28588)

Marks: 4.00

Pick out the correct sentence from the following sentences.

1. Hardly had the function got over, the crowd dispersed.
2. Hardly have the function getting over, the crowd dispersed.
3. The function was not got over after the crowd were dispersed.
4. Hardly had got over the function, the crowd disperse.

- ☐ 1 (Chosen option)
- ☐ 2
- ☐ 3
- ☐ 4

Question No.15 (Question Id - 28575)

Marks: 4.00

Pick out the correct sentence from the following sentences.

1. She doesn't like to gets up early.
2. She doesn't likes to get up early.
3. She doesn't like to get up early.
4. She doesn't likes getting up early.

- ☐ 1
- ☐ 2
- ☐ 3 (Chosen option)
- ☐ 4

Question No.16 (Question Id - 28569)

Marks: 4.00

Give meaning of the underlined idiom as used in the following sentence:

He requested her to reconsider the decision but she put her foot down.

1. agreed to consider
2. ignored
3. listened very carefully
4. refused to yield.

- ☐ 1
- ☒ 2 (Chosen option)
- ☐ 3
- ☐ 4

Question No.17 (Question Id - 28576)

Marks: 4.00

Pick out the correct sentence in active voice of the following sentence;

Why was such a letter written by your father?

1. Why had your father written such a letter?
2. Why did your father wrote such a letter?
3. Why did your father write such a letter?
4. Why was your father writing such a letter?

- ☐ 1
- ☐ 2
- ☒ 3 (Chosen option)
- ☐ 4

Question No.18 (Question Id - 28570)

Marks: 4.00

Fill in the blank with suitable preposition.

While going to Chandigarh, our car broke ____ in midway.

1. apart
2. up
3. down
4. into

- ☐ 1
- ☐ 2
- ☒ 3 (Chosen option)
- ☐ 4

Question No.19 (Question Id - 28590)

Marks: 4.00

This question gives a word followed by four choices.

From the choices, select the most suitable synonym (word which means the same) for the main word and mark its number as the answer.

OSTENSIBLE

1. strong
2. desirable
3. apparent
4. fateful

- ☐ 1
- ☐ 2
- ☒ 3 (Chosen option)
- ☐ 4

Question No.20 (Question Id - 28568)

Marks: 4.00

This question gives a word followed by four choices. From the choices, select the most suitable synonym (word which means the same) for the main word and mark its number as the answer.

PALPABLE

1. visible
2. perceivable
3. audible
4. presentable

- ☐ 1
- ☐ 2
- ☐ 3
- ☐ 4

Question No.21 (Question Id - 28567)

Marks: 4.00

Pick out the synonym of the word 'Communicable':

1. Communication
2. Contagious
3. Commutation
4. Understandable

- ☐ 1
- ☒ 2 (Chosen option)
- ☐ 3
- ☐ 4

Question No.22 (Question Id - 28572)

Marks: 4.00

Read the following sentence and choose the best definition for the underlined word by searching for context clues in the sentence.

Mr. Powers was so gullible that he believed even the most outlandish excuses of his insincere employees.

1. intelligent
2. naïve
3. dishonest
4. critical

- ☐ 1
- ☒ 2 (Chosen option)
- ☐ 3
- ☐ 4

Question No.23 (Question Id - 28580)

Marks: 4.00

Read the following paragraph and determine carefully the main idea. From the four choices, select the one statement that best supports the author's point:

Litigation is not always the only or best way to resolve conflicts. Mediation offers an alternative approach and it is the one that can be quite efficient and successful. Mediation can be faster, less expensive and can lead to create solutions not always possible in a court of law. Additionally, mediation focuses on mutually acceptable solutions, rather than on winning or losing.

This paragraph best supports the idea that

1. there is too much reliance on litigation in our society.
2. Litigation is expensive, slow and limited by its reliance on following the letter of the law.
3. Mediation is the best way to resolve a crisis.
4. Mediation can be an effective way to resolve conflicts.

- ☐ 1
- ☐ 2
- ☐ 3
- ☒ 4 (Chosen option)

Question No.24 (Question Id - 28589)

Marks: 4.00

Fill in the blank with suitable form of verb.

Read _____; nor to believe; but to weigh and consider.

1. to not contradict
2. contradict not to
3. to contradictory
4. not to contradict

- ☐ 1
- ☐ 2
- ☐ 3
- ☒ 4 (Chosen option)

Question No.25 (Question Id - 28594)

Marks: 4.00

Read the following passage carefully and answer the questions that follow.

The night was cold and dark. There was a great storm, thunder and lightning also. Most men and animals, adequately protected, were asleep in their homes. They were warm and happy. But some monkeys were running through the forest. They had no warm home and there was cold. Worried monkeys looked everywhere for shelter. They had almost resigned themselves to be flattened out by the cold. Suddenly they saw some fireflies. Now, fireflies have a light in their tails, as all our children know. The monkeys took the light for fire. Poor things, they did not know any better. They said, "We will go near the fire and warm ourselves."

There was a flock of birds in a tree nearby. One bird had a kind heart, and it felt sorry for the monkeys. It called out, "That is not fire, my friends! Those are fireflies. They give no heat. It is futile to run after them." Then monkeys got furious and their rage knew no bounds. They did not thank the bird. One monkey said rudely, "Is it so? We do not want unsolicited advice. I will teach you to say there is no fire." He jumped up the tree and pulled the poor bird out of its nest. "Alas!" said the poor bird. "Why did I try to help a fool?"

What happens when you try to help a fool?

1. You get a lot of credit for it.
2. You develop friendship with him.
3. You may invite danger for yourself.
4. You may harm him too.

- ☐ 1
- ☐ 2
- ☒ 3 (Chosen option)
- ☐ 4

Question No.26 (Question Id - 28591)

Marks: 4.00

Read the following passage carefully and answer the questions that follow.

The night was cold and dark. There was a great storm, thunder and lightning also. Most men and animals, adequately protected, were asleep in their homes. They were warm and happy. But some monkeys were running through the forest. They had no warm home and there was cold. Worried monkeys looked everywhere for shelter. They had almost resigned themselves to be flattened out by the cold. Suddenly they saw some fireflies. Now, fireflies have a light in their tails, as all our children know. The monkeys took the light for fire. Poor things, they did not know any better. They said, "We will go near the fire and warm ourselves."

There was a flock of birds in a tree nearby. One bird had a kind heart, and it felt sorry for the monkeys. It called out, "That is not fire, my friends! Those are fireflies. They give no heat. It is futile to run after them." Then monkeys got furious and their rage knew no bounds. They did not thank the bird. One monkey said rudely, "Is it so? We do not want unsolicited advice. I will teach you to say there is no fire." He jumped up the tree and pulled the poor bird out of its nest. "Alas!" said the poor bird. "Why did I try to help a fool?"

In the above passage, night is described as_____.

1. lovely & attractive
2. cold & stormy
3. fit for hunting
4. warm & thunderous

- ☐ 1
- ☒ 2 (Chosen option)
- ☐ 3
- ☐ 4

Question No.27 (Question Id - 28592)

Marks: 4.00

Read the following passage carefully and answer the questions that follow.

The night was cold and dark. There was a great storm, thunder and lightning also. Most men and animals, adequately protected, were asleep in their homes. They were warm and happy. But some monkeys were running through the forest. They had no warm home and there was cold. Worried monkeys looked everywhere for shelter. They had almost resigned themselves to be flattened out by the cold. Suddenly they saw some fireflies. Now, fireflies have a light in their tails, as all our children know. The monkeys took the light for fire. Poor things, they did not know any better. They said, "We will go near the fire and warm ourselves."

There was a flock of birds in a tree nearby. One bird had a kind heart, and it felt sorry for the monkeys. It called out, "That is not fire, my friends! Those are fireflies. They give no heat. It is futile to run after them." Then monkeys got furious and their rage knew no bounds. They did not thank the bird. One monkey said rudely, "Is it so? We do not want unsolicited advice. I will teach you to say there is no fire." He jumped up the tree and pulled the poor bird out of its nest. "Alas!" said the poor bird. "Why did I try to help a fool?"

The monkeys were running through the forest because they _____.

1. were in search of food
2. liked running about in dark
3. were in search of a warm shelter
4. wanted to kill the birds

- ☐ 1
- ☐ 2
- ☒ 3 (Chosen option)
- ☐ 4

Question No.28 (Question Id - 28593)

Marks: 4.00

Read the following passage carefully and answer the questions that follow.

The night was cold and dark. There was a great storm, thunder and lightning also. Most men and animals, adequately protected, were asleep in their homes. They were warm and happy. But some monkeys were running through the forest. They had no warm home and there was cold. Worried monkeys looked everywhere for shelter. They had almost resigned themselves to be flattened out by the cold. Suddenly they saw some fireflies. Now, fireflies have a light in their tails, as all our children know. The monkeys took the light for fire. Poor things, they did not know any better. They said, "We will go near the fire and warm ourselves."

There was a flock of birds in a tree nearby. One bird had a kind heart, and it felt sorry for the monkeys. It called out, "That is not fire, my friends! Those are fireflies. They give no heat. It is futile to run after them." Then monkeys got furious and their rage knew no bounds. They did not thank the bird. One monkey said rudely, "Is it so? We do not want unsolicited advice. I will teach you to say there is no fire." He jumped up the tree and pulled the poor bird out of its nest. "Alas!" said the poor bird. "Why did I try to help a fool?"

The bird tried to help the monkeys because she _____.

1. gave an unsolicited advice.
2. was kind and felt sorry for them.
3. wanted to save the fireflies
4. wanted to distract the monkeys.

- ☐ 1
- ☒ 2 (Chosen option)
- ☐ 3
- ☐ 4

Question No.29 (Question Id - 28598)

Marks: 4.00

Arrange the following parts of a sentence in order to make a meaningful sentence.

P: an extra person

Q: this card entitles

R: with you free

S: you to take

1. QSPR
2. PQRS
3. RPQS
4. SQRP

- ☒ 1 (Chosen option)
- ☐ 2
- ☐ 3
- ☐ 4

Question No.30 (Question Id - 28597)

Marks: 4.00

Pick out the part of sentence which has an error. If there is no error, mark the option "No Error".

Writing the letter is often cheaper than telephoning
A B C

1. A
2. B
3. C
4. No Error

- ☐ 1
- ☐ 2
- ☐ 3
- ☐ 4

Question No.31 (Question Id - 28596)

Marks: 4.00

Fill in the blank with a suitable form of verb.

Time and tide_____ for none.

1. waits
2. wait
3. waiting
4. had waited

- ☒ 1 (Chosen option)
- ☐ 2
- ☐ 3
- ☐ 4

Question No.32 (Question Id - 28595)

Marks: 4.00

Fill in the blank with a suitable word.

There are more things in heaven and earth_____ are dreamt of in our philosophy.

1. then
2. thin
3. than
4. where

- ☐ 1
- ☐ 2
- ☒ 3 (Chosen option)
- ☐ 4

Question No.33 (Question Id - 28599)

Marks: 4.00

Pick out the correct sentence from the following sentences.

1. Due to his ill health, he decided to not perform on the stage.
2. Due to his ill health, he decided not to perform on the stage.
3. Due to his ill health, he did not decided to perform on the stage.
4. Due to his ill health, he decide not to perform on the stage.

- ☐ 1
- ☒ 2 (Chosen option)
- ☐ 3
- ☐ 4

Question No.34 (Question Id - 28600)

Marks: 4.00

Pick out the correctly spelt word.

1. unequivocaly
2. unequivocally
3. enequivocally
4. uniquivocally

- ☐ 1
- ☒ 2 (Chosen option)
- ☐ 3
- ☐ 4

Save & Print